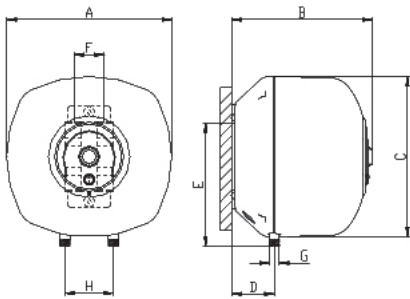


> BRAVO COMPACT BUT GENEROUS



- > External casing in strong ABS
- > Reinforced hanging bracket with internal steel bar
- > Capillary thermostat
- > High concentration magnesium anode
- > ON/OFF switch
- > Front stepless temperature adjustment, with power level led indication
- > Pressure relief valve, set to 8,5 bar
- > Electric cable included (without plug)

*S = Undersink



BRAVO			SN 10	SN 10 S*	SN 15	SN 15 S*	SN 30
Dimensions	A	mm	340	340	360	360	440
	B	mm	291	291	329	329	389
	C	mm	347	347	375	375	455
	D	mm	90	90	97	97	113
	E	mm	252	114	265	125	318
	F	mm	66	66	66	66	66
	G	inches	1/2" M	1/2" M	1/2" M	1/2" M	1/2" M
	H	mm	100	100	100	100	100
Capacity		litres	10	10	15	15	30
Heating time	ΔT 35° C	min.	17'	17'	26'	26'	52'
	ΔT 45° C		22'	22'	33'	33'	1 h 07'
Power		W	1500				
Voltage			220~240 V 50-60 HZ				
Weight		Kg	6,5	6,5	7,8	7,8	11,5

FEATURES



OPERATING LIGHT



EXTERNAL REGULATION



ABS SHOCK-PROOF
OUTER CASING



HIGH LIQUID INTRUSION
PROTECTION



BLUE SILICON
ENAMELLING



ON/OFF SWITCH